

Hessaire Oscillation Motor Replacement Instructions

Covers Most
Oscillating Models



⚠ WARNING Always unplug unit from power source before performing any maintenance. Failure to do so could result in serious injury, electrical shock or death. Ensure back access panel and all parts are securely fastened back in place and nothing is obstructing the fan blade prior to powering the unit up again. See warning label on back of cooler prior to servicing.



Suggested Tools: #2 phillips screwdriver, flathead screwdriver, thin nose pliers, yellow wire nut, cable tie

Note: On models MC37/61, M150/250 & MC26, oscillator motor is located directly under control panel switch box and is accessed through the control panel and switch box. Control panel and switch box will need to be opened and moved aside for access. For models MC92 & M350, the oscillator motor is accessed from the back of the cooler by removing the back media pads and the control panel back cover is removed by squeezing tabs and pulling off.

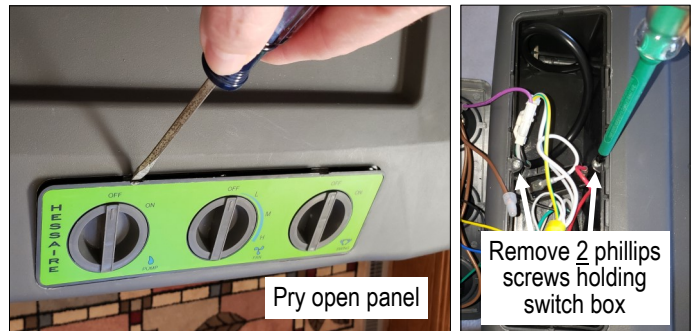
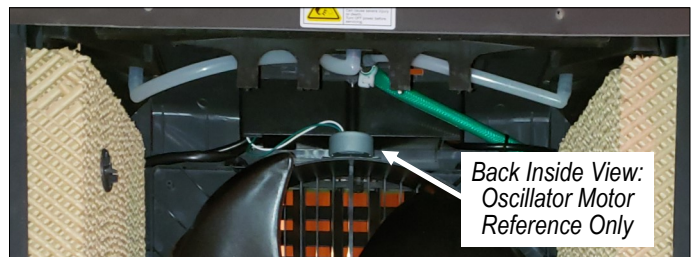
Instructions for models: MC37, MC61, M150, M250:

Ensure unit is turned **off** and **unplugged**.

- 1) Locate control panel. Open control panel by inserting flathead screwdriver into slots at top of control panel and prying open. Flip panel over to access wires.
- 2) Remove both phillips screws holding switch box to lift switch box up to determine which 2 wires run up from the oscillator motor.
- 3) Locate green and white wires from oscillator motor. Use thin nose pliers to squeeze tip of spade connector clip to remove green wire from "Swing" switch. Note: Take a picture or mark correct location of wires prior to disconnecting to ensure that the replacement part is installed correctly.
- 4) Disconnect white wire from group. Remove wire nut to disconnect. Use yellow wire nut when re-connecting the new oscillator motor.
- 5) Feed both oscillator motor wires down through bottom of switch box.
- 6) Unscrew both phillips screws holding oscillator motor down.
- 7) Remove defective oscillator motor.

Note:

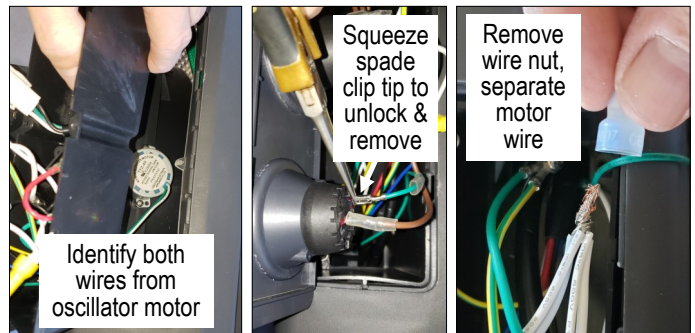
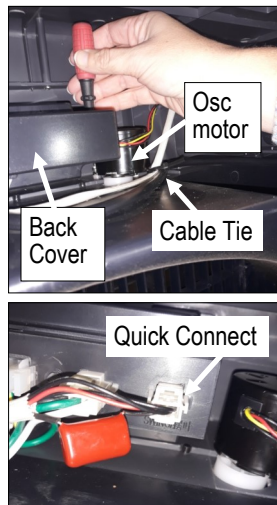
Picture instructions shown for Models: MC37/61, M150/250. See notes for sections pertaining to other models.



Instructions for models: MC92V, M350:

Ensure unit is turned **off** and **unplugged**.

- 1) Remove rear panels and media sections (2 ea).
- 2) Remove oscillation motor hold down screw with a short phillips screwdriver.
- 3) Cut cable tie to free up osc motor.
- 4) Remove back cover by squeezing it and pulling out. It is held in place with tabs.
- 5) Disconnect osc. motor wires by unplugging "quick connect".
- 6) Remove oscillation motor.



Notes for Model MC26:

MC26 oscillation motor is accessed by removing electronic control panel from front using a screwdriver to pry open panel at tabs. Once open, move aside to access hold down screws for osc motor. Remove back control box cover screws to access wire connections. Disconnect by removing osc motor plug end from back of electronic control board.

⚠ Reverse steps to install new motor. Ensure all connections are secure, control cover is properly attached.

Note: Oscillator motor can only be installed one way when tabs are lined up correctly. Ensure cam stem is properly seated in slot.

